

Homework 1

Due Wednesday, September 2

WMMY: Ch 1 # 1, 5, 11 (do by hand), 13, 18abc, 19*, 22*, 25, 27
 Ch 2 # 5, 9, 15, 51, 53, 67, 73

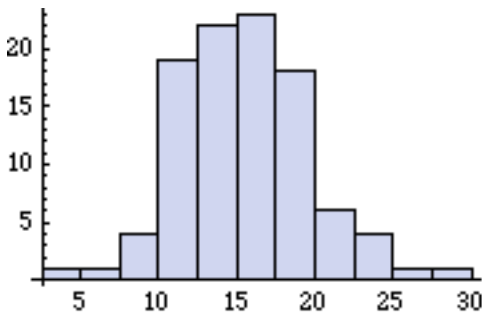
* For #19, do parts a and c only, then describe the shape of the distribution and discuss what that says about the failure of pumps.

* For #22, draw the location of mean and the spread of ± 1 SD on your histogram

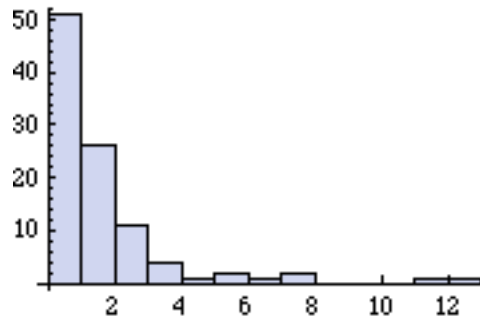
Problem A:

- i. Give a set of five numbers from 0-10 with larger mean than median.
- i. Give a set of five numbers from 0-10 with smaller mean than median.
- i. Give a set of five numbers from 0-10 with mean and median equal.
- i. Give a set of six numbers from 0-10 with the largest possible variance.

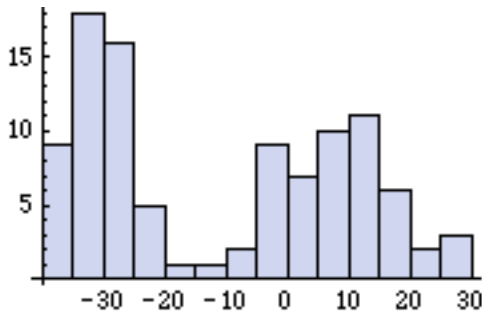
Problem B: Histograms of four data sets are shown below. For each, describe the general shape of the distribution, then estimate the median, the mean, and the standard deviation.



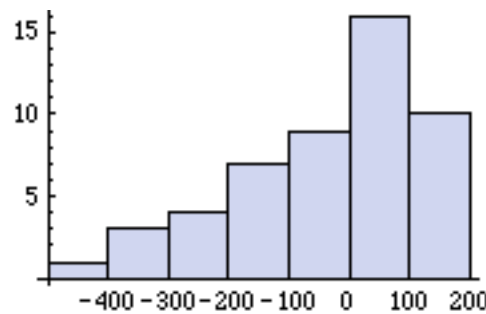
I



II



III



IV